



AGENDA/CONTENTS



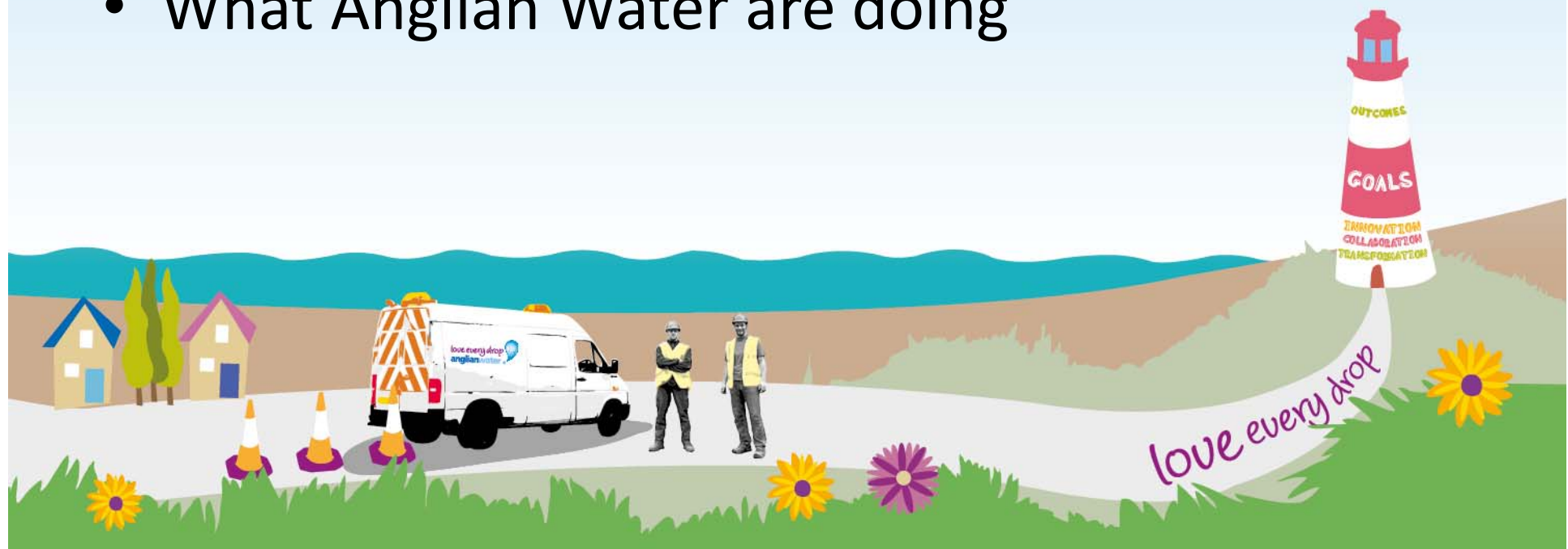
1. Water Fittings
2. Lead
3. Keep Water Healthy
4. Any questions ???



More legislation!



- What are the Regulations
- How do they affect me and my business
- Potential consequences
- What Anglian Water are doing



Never heard of them



- Around since before the war
- Byelaws or Regulations ?
- Where do they apply
 - Think Building Regulations



How do they affect business



- New builds
- Existing properties
- Regulation 5
- Conflict with Legionella





Category 1

Category 2

Category 3

Category 4

Category 5

Water

Harmful Fluids



love every drop



...and domestic properties



- Rainwater Reuse
- Modern plumbing design
- Tap hygiene
- Outside taps



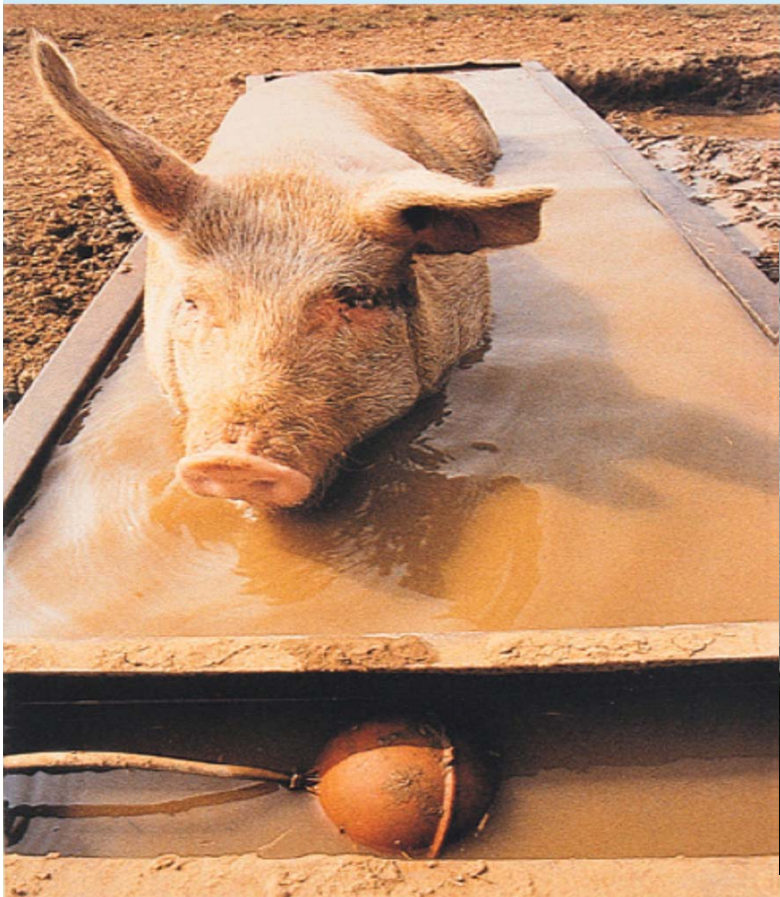
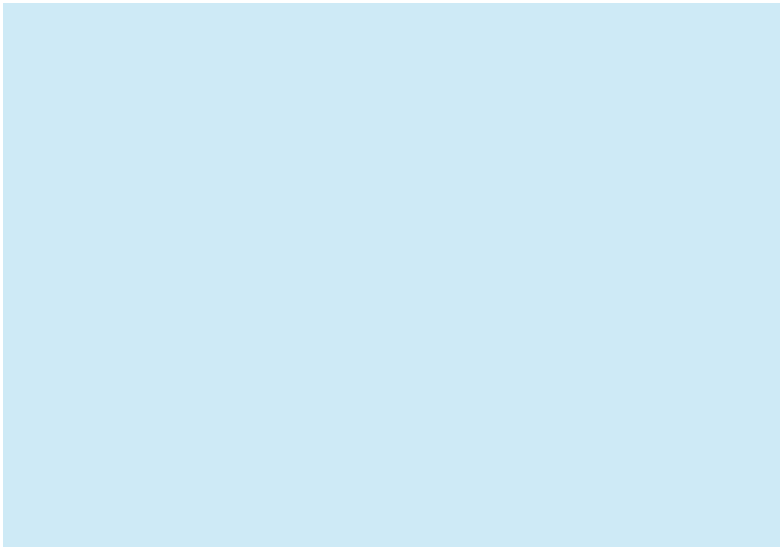


Typical issues



- Heating systems - RPZ
- Water using plant or machinery
- Domestic type use
- Taps and sinks





Potential Consequences



- Contamination
- Waste
- Undue consumption
- Prosecution



What are we doing



- > 9000 inspections a year
- Website information
- Approved Plumbers
- Social media
- Road Shows

🏠 Builders & developers | Water fittings regulations

Water fittings regulations



The Water Supply (Water Fittings) Regulations 1999 govern the installation and maintenance of water fittings in any premises which are connected, or are to be connected, to a public water supply.

The regulations do not apply to premises which only have a private source of water, although they do provide a useful code of practice for private supplies.

The regulations protect public health and promote sensible and efficient use of water by placing legal duties on the installers of water systems and owners and occupiers of premises.

Our quick guide to water fittings regulations

- 📄 22 December 2015 [Our guide to the Water Fittings Regulations \(pdf, 4.80MB\)](#)
- 📄 24 April 2017 [Be safe, be WaterSafe \(pdf, 0.56MB\)](#)
Information leaflet produced by WaterSafe
- 📄 10 January 2017 [Planning some plumbing work? \(pdf, 0.90MB\)](#)
- 📄 10 January 2017 [Information guide for your home \(pdf, 1.22MB\)](#)
- 📄 10 January 2017 [Information guide for businesses \(pdf, 1.31MB\)](#)
- 📄 10 January 2017 [Information guide for farm and agricultural buildings \(pdf, 2.57MB\)](#)

love every drop





love every drop.
anglianwater